

# Performance Management Center

Cirries Performance Management Center (PMC) is the centralized monitoring platform for your network. This platform works in conjunction with Cirries PacketPoint and MetaPoint products. It is designed to augment other existing network performance and security applications.

Cirries PMC provides quick views of the health and status of your network. It generates threshold-based alarms for proactive network performance and security investigation.

With the PMC, network visualization is created from aggregated flow records. The PMC provides reports to view total traffic bandwidth, each link bandwidth as well as details about the traffic type throughout the network.

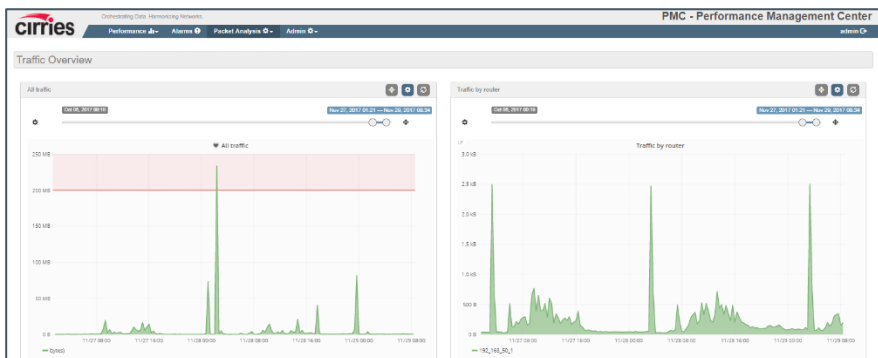
A workflow investigation tool is automatically initiated based upon anomalies or defects in your network. It supports commands such as pings and trace routes in addition to file searches of flow records or raw packet capture. It can also match traffic patterns from different time periods during an investigation.

Cirries PMC quickly determines the performance of each network element, giving the status of CPU, RAM, LAN card, disk utilization, and packet or flow performance. Historical analysis helps identify possible element hardware and software failure or degradation.

## FEATURES

- Early detection of network degradation and failures
- Monitors network activity, performance, security, and discovery of unusual usage patterns
- Identifies configuration weaknesses that affect performance
- Recognizes malicious activity and security incidents
- Drag and drop GUI to update network elements from a central location
- Automatically discover and update network topology
- Unlimited customized reports
- Easy integration to other systems through an application dock
- Web-based visualization allows for multiple simultaneous users

## THRESHOLD-BASED ALERTING



Thresholds for the bandwidth utilization and other performance metrics can be set by the user to send email alerts or to the monitoring screens.

Security analytics is done by comparing the historical network data to real-time data being gathered by the system. This is displayed on the dashboard which can be configured for custom thresholds and alerts to match your network requirements.

