



**GOOD JOB, AGENTS!**  
YOU THREE ARE DOING GREAT  
WORK KEEPING BUSINESS  
NETWORKS EXCELLENT.

**NOW, FOR YOUR NEXT  
ASSIGNMENT IN THE  
MANUFACTURING SECTOR.**

**WHAT CAN YOU TELL ME  
ABOUT DIGITAL TWINS?**





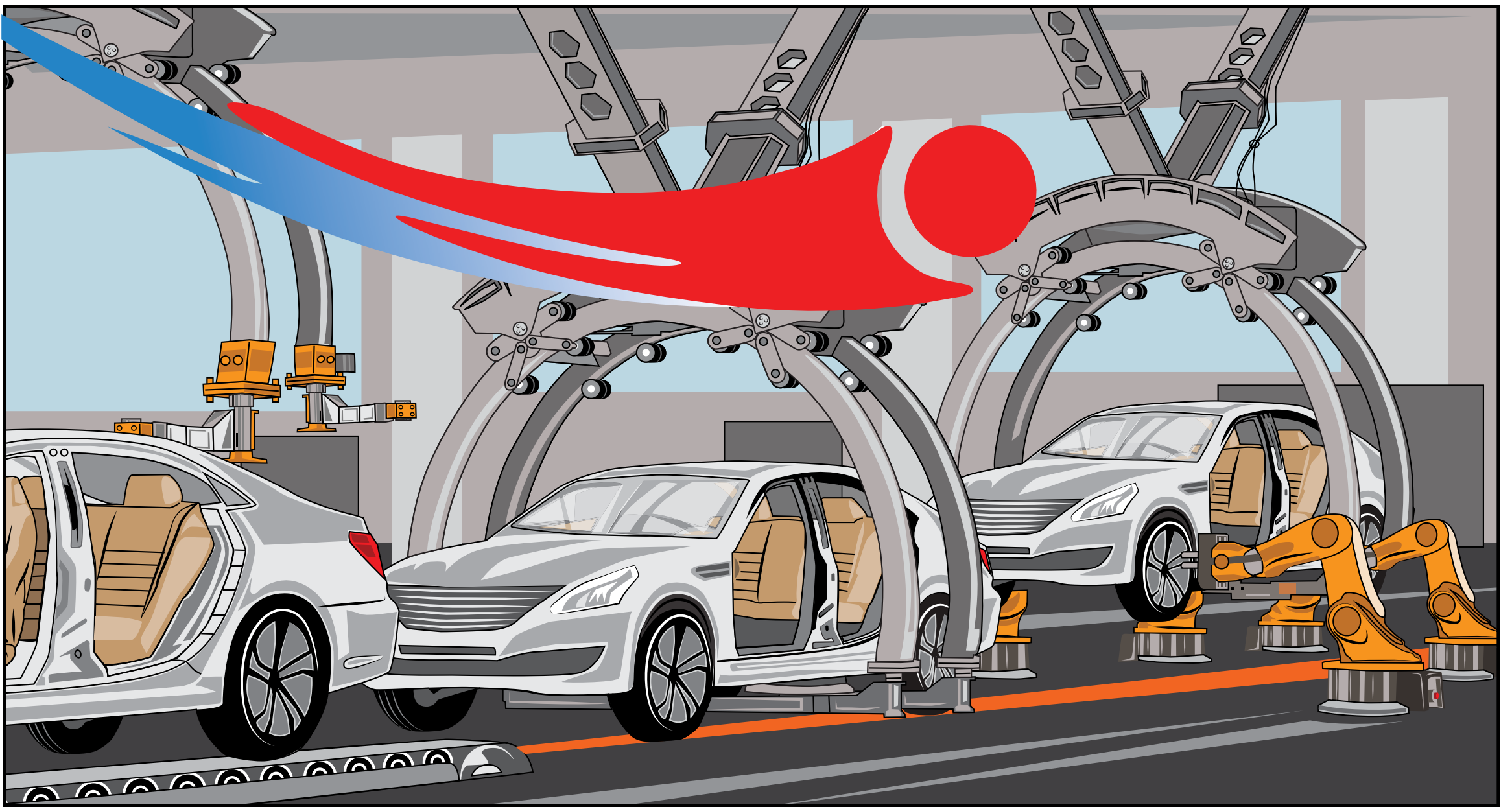
**DIGITAL TWINS ENABLE MANUFACTURERS TO BUILD VIRTUAL REPLICAS OF PRODUCTS THEY WANT TO DEVELOP OR IMPROVE.**

**DIGITAL TWINS CAN ALSO HELP MANUFACTURERS ADVANCE THEIR BUSINESS PROCESSES, DEVISE BETTER PROCEDURES, DETERMINE FAILURE RATES AND SET REPLACEMENT TIMEFRAMES FOR THE PRODUCTS THEY MAKE.**

**SPOT ON, NANO!**

**AND, OF COURSE, MANUFACTURERS DEPEND ON EXCELLENCE IN THEIR 5G AND OTHER NETWORKS TO MAKE ALL THIS HAPPEN.**





***YOU THREE ARE NOW ASSIGNED TO GLOBAL WHEELS, INC.***

***GW I IS RAMPING UP THE DESIGN OF A NEW ELECTRIC ENGINE THAT COULD REVOLUTIONIZE ELECTRIC VEHICLE MANUFACTURING.***



***NANO! MONITOR THE DIGITAL TWIN APP METADATA AND REPORT ANY ANOMALIES TO DIRECTOR DART. AS USUAL, IF YOU FIND A PROBLEM, REPORT IT PRONTO. WE WANT TO KNOW ABOUT IT SO WE CAN DELIVER THE FIX RIGHT AWAY. NO WAITING. NO TRYING TO GUESS WHAT'S HAPPENING. DIRECTOR DART NEEDS TO KNOW IN REAL TIME.***



***YOU TWO!***

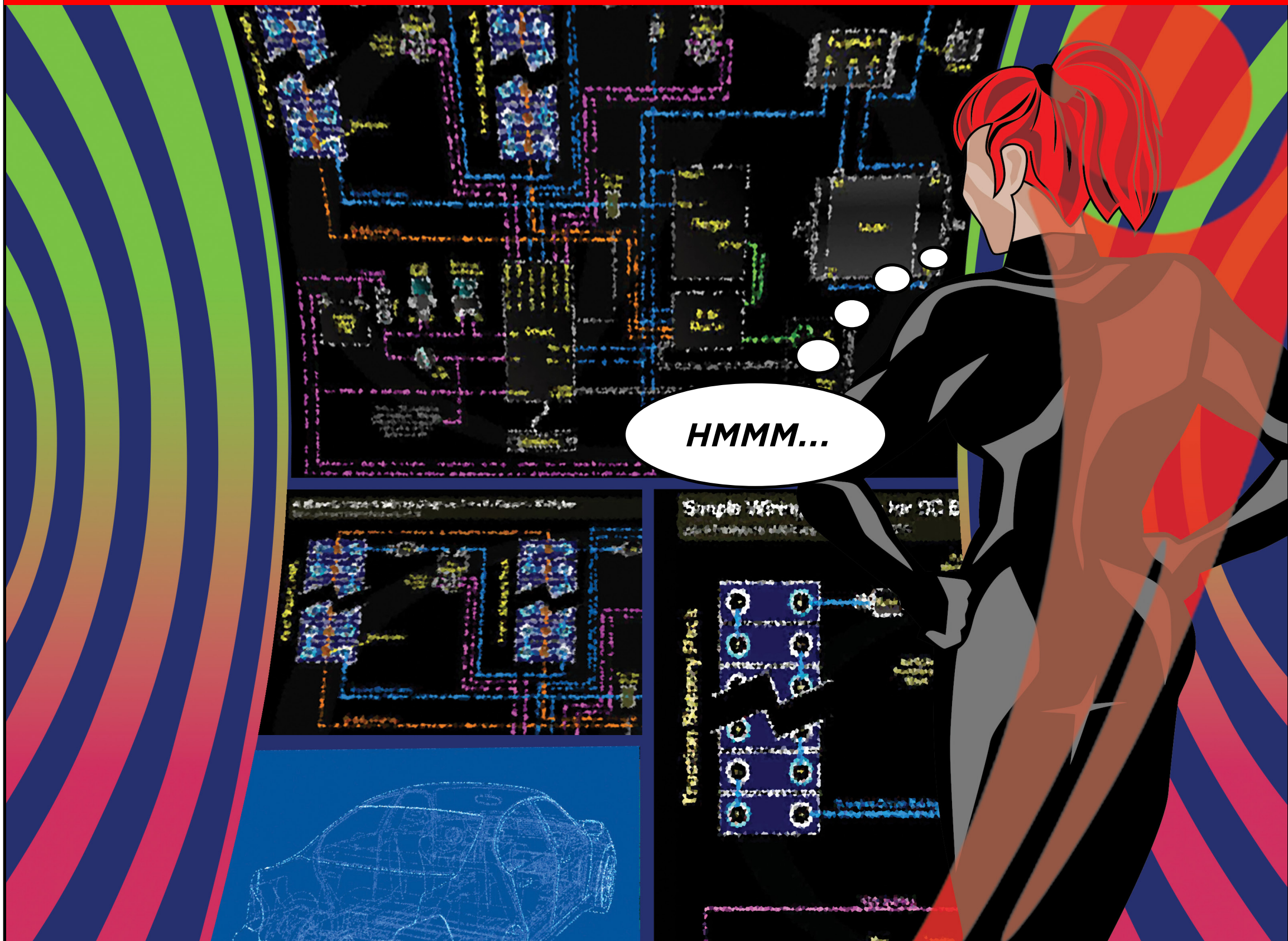


***PATROL THE NETWORK  
AND WATCH FOR ANYTHING  
LOOKING REMOTELY LIKE JITTER,  
BOTTLENECKS  
OR RETRANSMITTED PACKETS  
- OR ANYTHING ELSE THAT  
DOESN'T BELONG.***

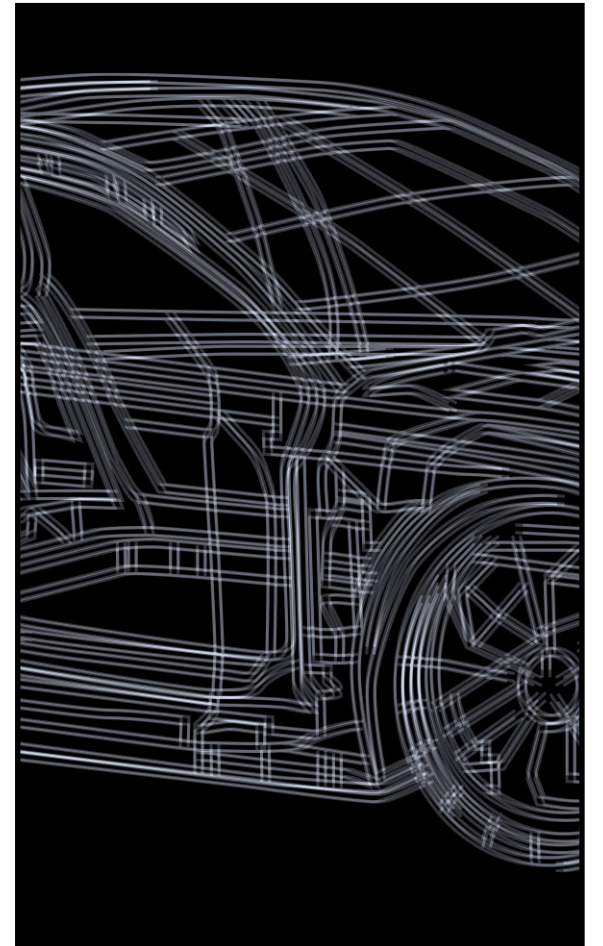
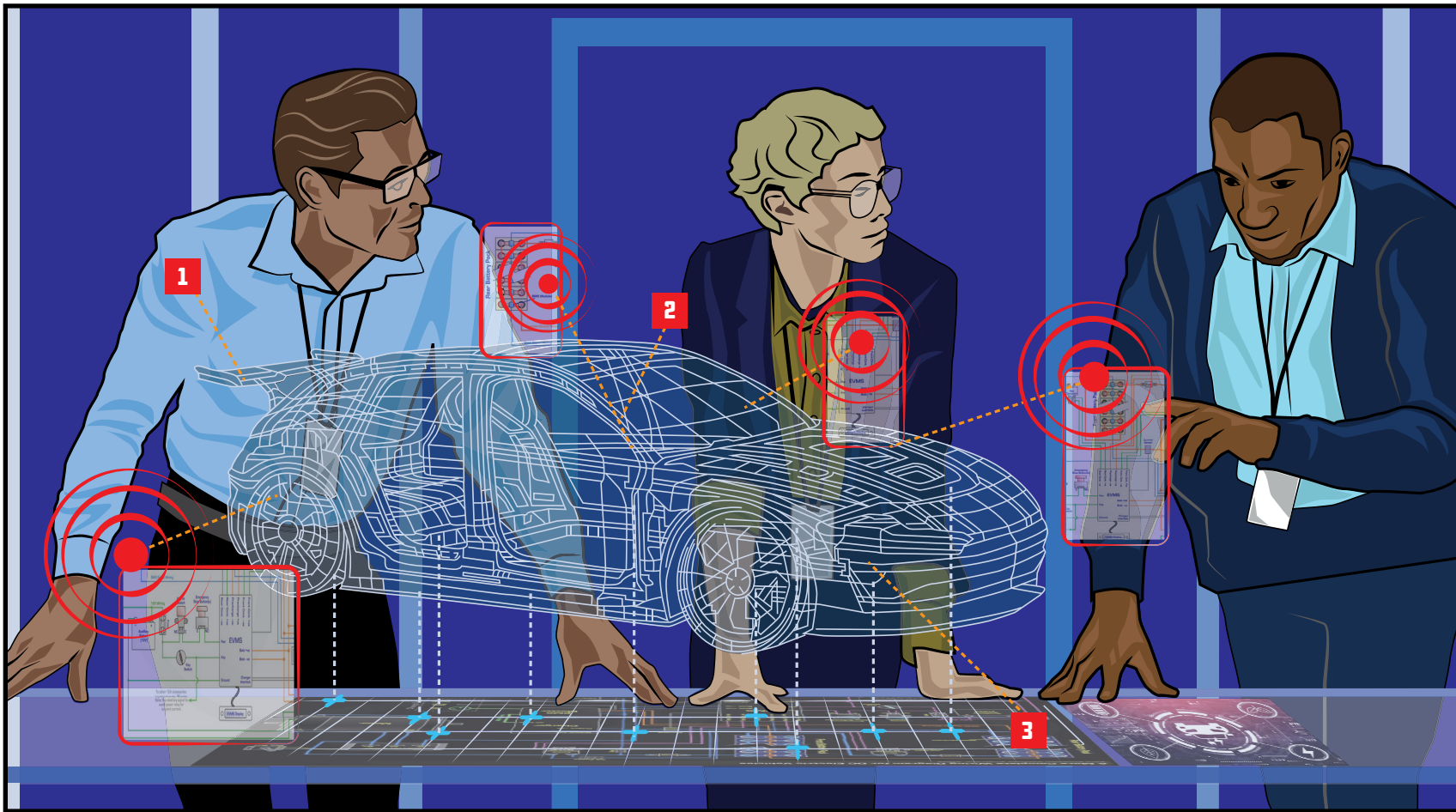


***TO YOUR STATIONS!***

**NANO WATCHES THE DATA FLOW FROM THE DIGITAL TWIN APP.**



**STREAK AND JIFFY RAPIDLY SORT  
CLUSTERS OF DATA PACKETS.**



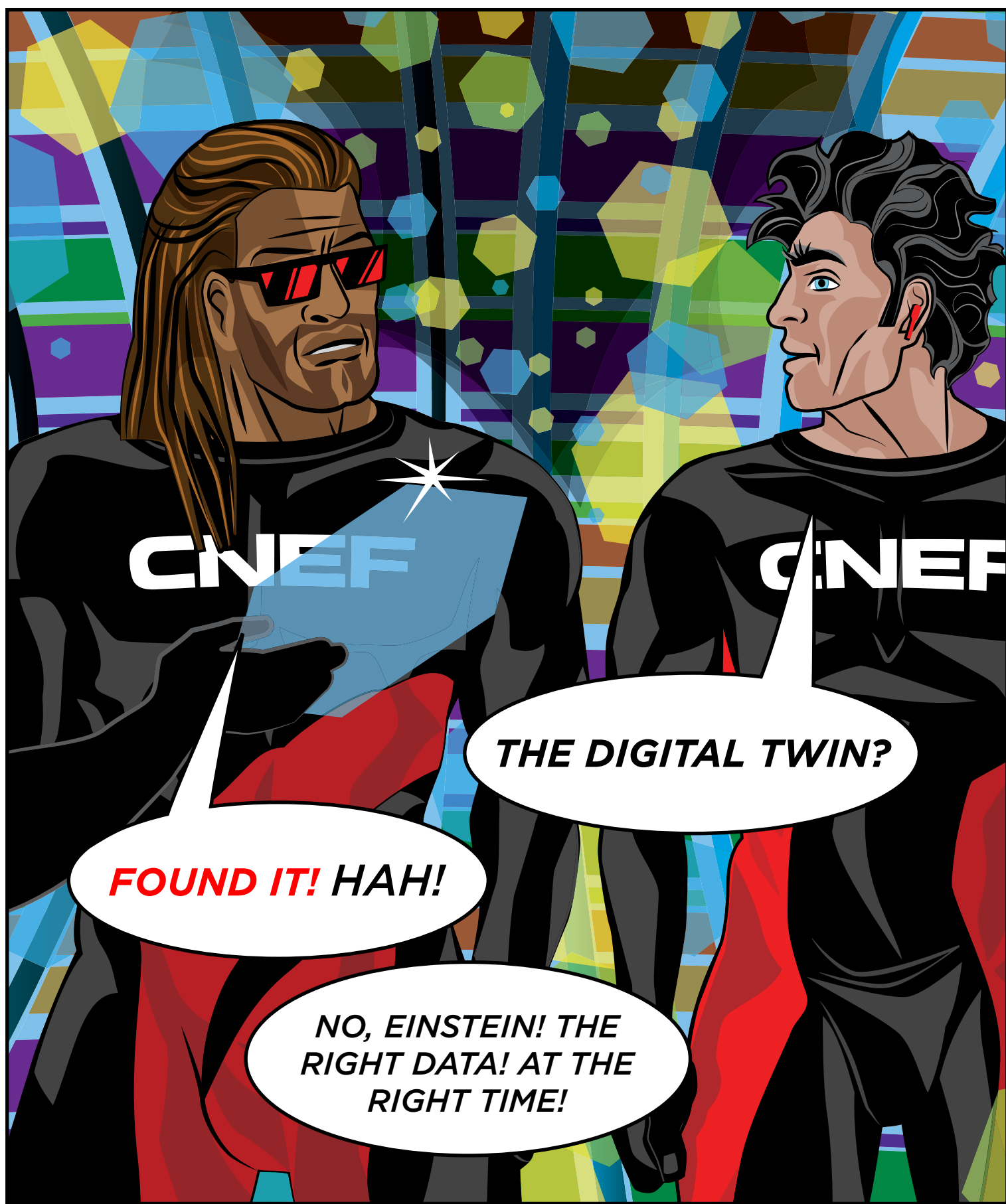
**NANO SEES THE SCREENS ARE  
SLOW TO RESPOND AND DISTORTED.**



**NANO JUST TOLD  
DIRECTOR DART THAT  
THE VIRTUAL TWIN  
APP IS RUNNING TOO  
SLOWLY, DEGRADING  
PERFORMANCE.**



**DIRECTOR DART IS  
SENDING AUTOMATION  
AGENTS TO ALERT  
NETWORK OPERATIONS  
OF THE PROBLEM AND  
THE FIX FOR IT.**



**THE CLUSTER OF PACKETS DISSOLVES AND ALL PACKETS START FLOWING FREELY AND AT NORMAL SPEED.**



WHAT WENT WRONG?

**INSUFFICIENT BANDWIDTH FROM THE RADIO ACCESS NETWORK (RAN) TO THE MOBILE EDGE COMPUTING (MEC) CENTER FOR THE HIGH-BANDWIDTH DIGITAL TWIN APPLICATION...**

**...THIS CREATED EXCESSIVE LATENCY, JITTER AND APP DISRUPTION.**

**NETWORK OPS RAPIDLY RECONFIGURED SECONDARY APPLICATIONS ONTO THE BACKUP LINK TO THE MEC.**

**AN ORDER HAS BEEN PLACED TO INCREASE BANDWIDTH ON THE LINK.**



**HEADS UP, JIFFY AND STREAK! EVERYTHING'S BACK TO NORMAL.**



**THANKS, NANO. GREAT NEWS.**

**LET'S KEEP ON PATROLLING.**





*Follow the ongoing  
Adventures In Network Excellence  
of Jiffy, Nano, Streak  
and the Automation Agents  
as they solve  
network performance issues  
across a growing range of  
industries.*

**cirries**  
[www.cirries.com](http://www.cirries.com)